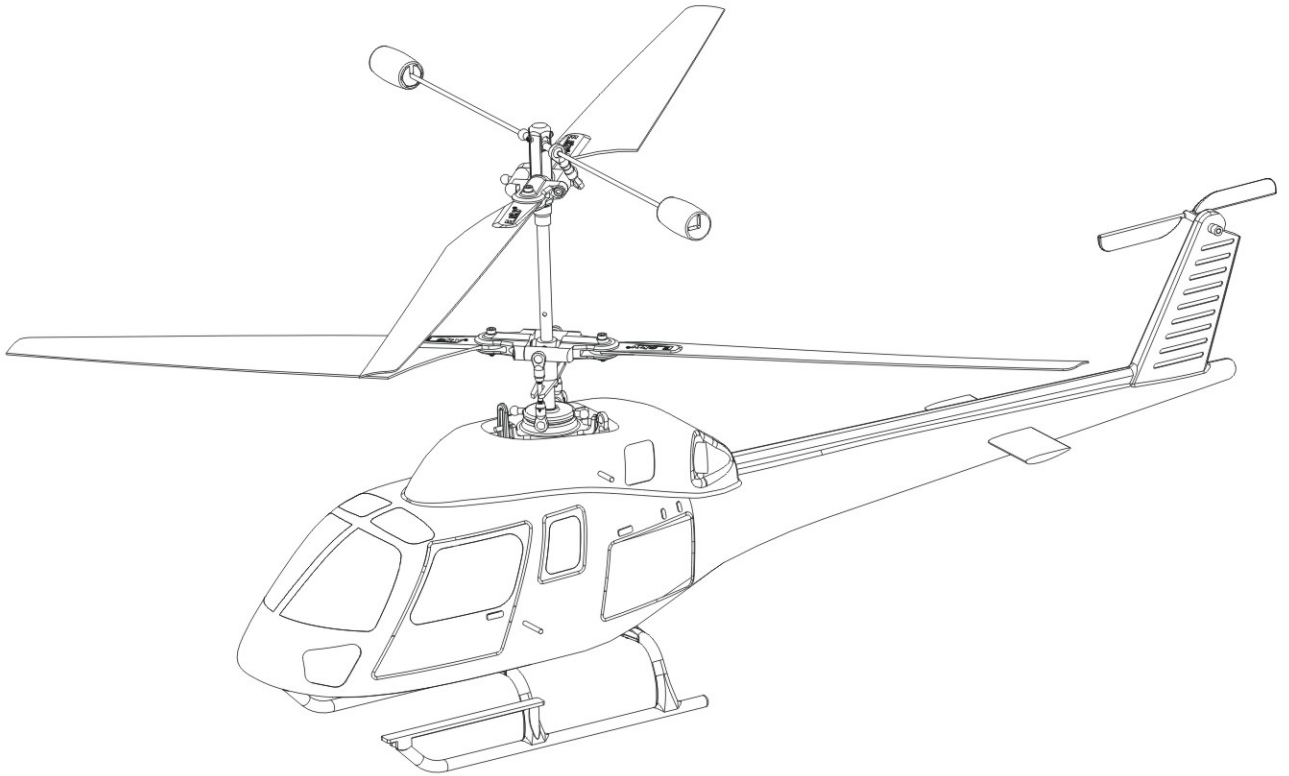


DTS T500 CA (Sep. 2012, V2)



FOREWORD

Thank you for choosing ESKY's product. DTS T500 CA is a 4-channel RC Co-axial Helicopter which is specifically developed for the beginners of this hobby.

For better understand and usage of this RC Helicopter, please read this manual carefully before installation and operation. This can ensure proper usage and safe operation!

For your convenience of adjustment, maintenance and other operation, please keep this manual in a proper manner.

Specification

Length: 510mm

Width: 110mm

Height: 260mm

Main Rotor Diameter: Φ 460mm

Weight: Approximately 400g (with battery)

Standard Contents

- 11.1V 800mAh Battery;
- 370Motor*2pcs
- 7.5g digital Servo (1.0kg.cm 0.1s/60°)
- 6-Channel Transmitter
- 4-in-1 Control Unit (Gyro, ESC, Receiver, Mixer)

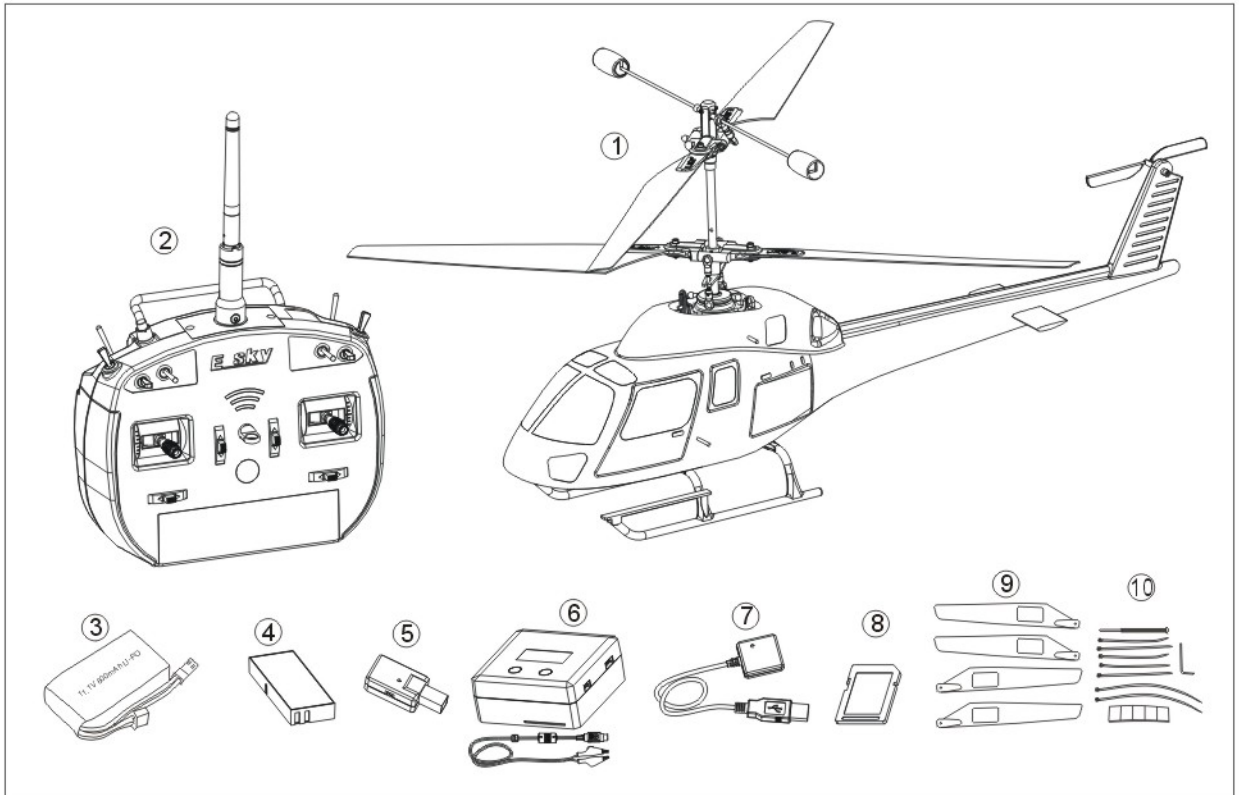
※Before this model has being significantly changed to another new version, the parts, appearance and the existing version can be developed and modified that would lead to a slight difference from the original design. ESKY reserve ALL the Rights of change of parts and contents WITHOUT specified notification.

Table of Contents

1	Check of package's parts and accessories	2
2	6T Transmitter Setting Module	3
3	Pre-Flight Control Test	4
4	Helicopter's Parts Introduction	5
5	Frequently Faced Problems and Solutions	6
6	Flight operation procedures	7
7	Exploded View	8
8	Replaceable Parts List	9

Check of package's parts and accessories

Please check the parts and accessories in the package. In the event of defective or missing parts, please contact the retailer for help.

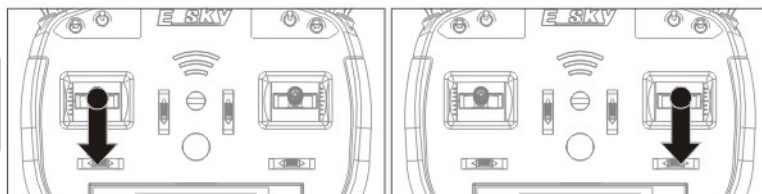
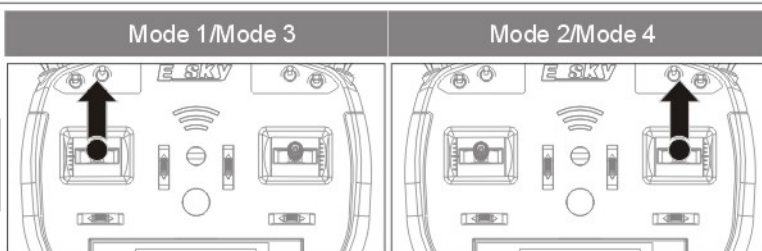
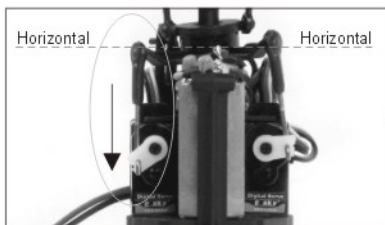
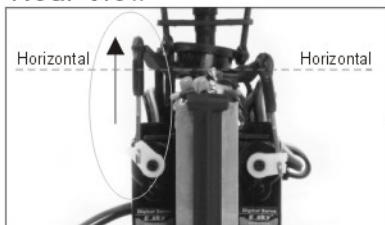


1.RC Helicopter	1
2.2.4GHz 6-Channel Transmitter	1
3.11.1 V, 800 mAh Li-Po Battery	1
4.Li-Po Battery of Transmitter	1
5.Wireless Connection Device	1
6.2S & 3S Batery Charger	1
7.Charge Wvire	1
8.SD Card	1
9.Main Blade	4
10.Tool Pack	1

Pre-Flight Control Test (According to Default Setting)

Control Test: Elevator

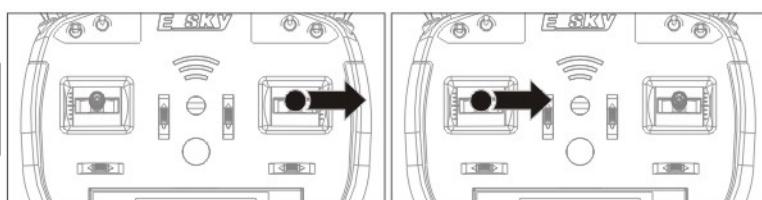
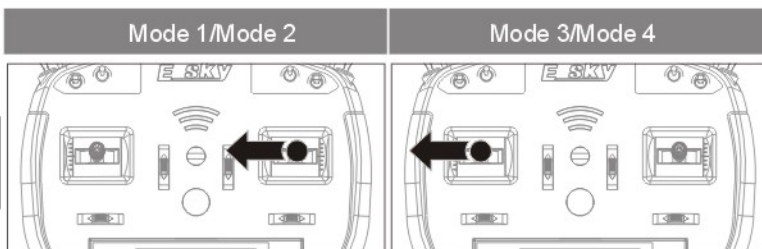
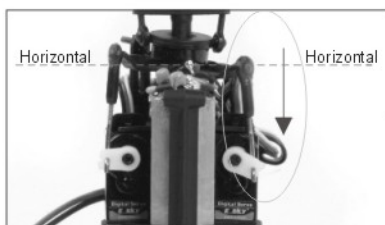
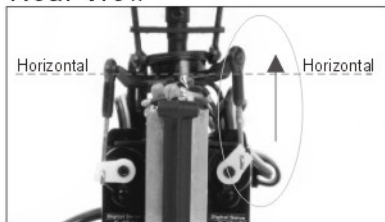
Rear View



Pushing up the elevator stick will lead the elevator servo push one side of the swashplate upward (Forward movement); Pulling down the elevator stick will lead the elevator servo pull one side of the swashplate downward (Backward movement).

Control Test: Aileron

Rear View

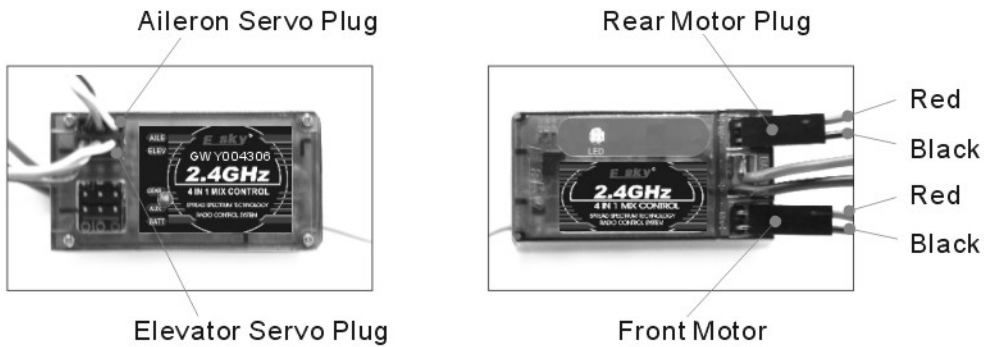


Pushing the aileron stick to the left will lead the aileron servo push one side of the swashplate to the left; Pushing the aileron stick to the right will lead the aileron servo push one side of the swashplate to the right.

Helicopter's Parts Introduction

		Plastic Blade A
Plastic Blade B		Main Shaft
Aileron Servo		Rear Motor
Front Motor		Elevator Servo
"4 in 1" Mix Controller		Battery
		Landing Skid

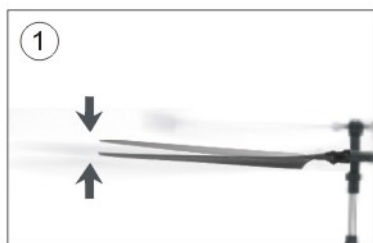
Connection of the 4-in-1 Controller



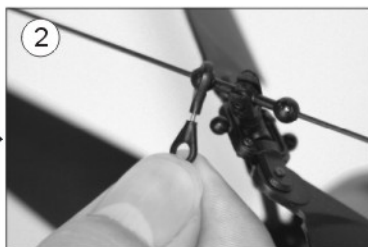
Frequently Faced Problems and Solutions

1、 Main Blades' Track Adjustment

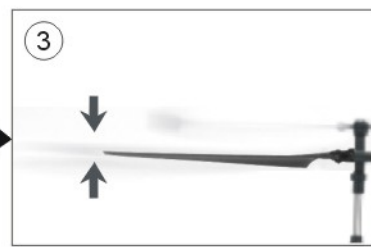
Adjustment needed when the tips of the blades are not in on the same track while spinning



This blur image will be seen when the tips of the blades are not in the track



Continuously prolong or shorten the flybar linkage and test the tracking until the blur image disappears.



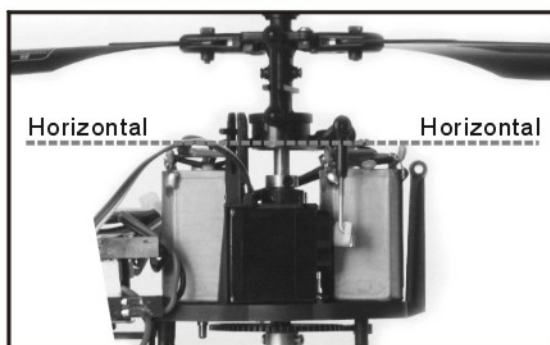
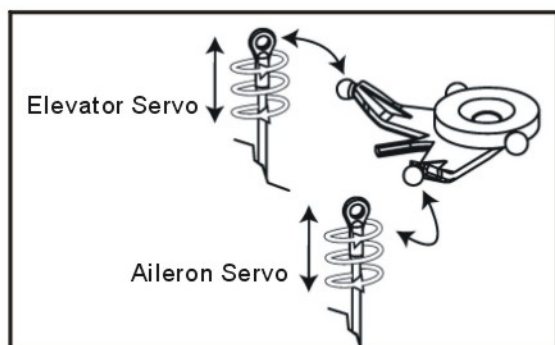
The tips are in the track, no adjustment is necessary

Note:

If the main blades are broken or appear amounts of scratches, the flight performance of the helicopter will be affected and needed to be replaced. Mind the position of the upper and lower main blades when replacing.

2、 Adjustment of Servo Linkages

Ensure the throttle trim is minimized and other trims are in the middle position when during flight. If the helicopter keeps flying rightward or leftward: Take off the canopy and check if the swashplate's position remains horizontal. You can take off the two servo linkages and adjust it to suitable length (as shown below) until the two sides keep the swashplate in a horizontal position. And test fly after the adjustment.



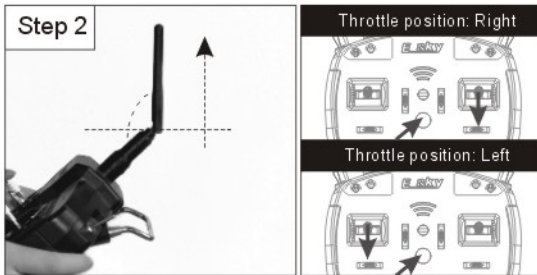
The servos are set and fixed as default to finest position before packaging. Readjustment is not necessary in most of the general situations.

Flight Operation Procedure

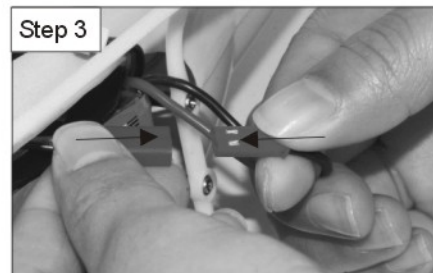
1. Take off procedure



Insert a fully charged battery in the battery support and ensure the stability of the mounting.



Adjust the antenna to the shown position. Pull the throttle to the most downward position then switch on the transmitter.



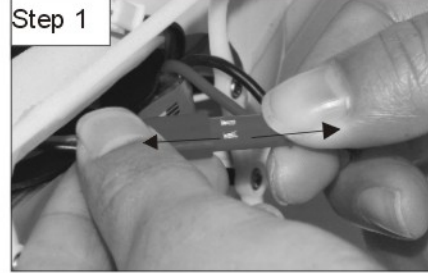
Connect the electricity



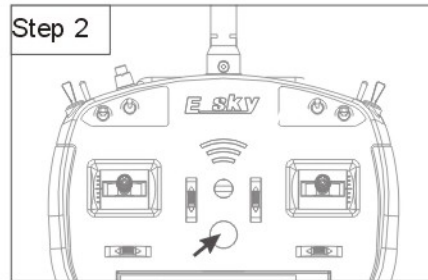
Note: After connected to electricity, keep the helicopter standby until solid green light is seen.

Solid green light indicates helicopter is in standby state.

2. End-flight operation procedure:



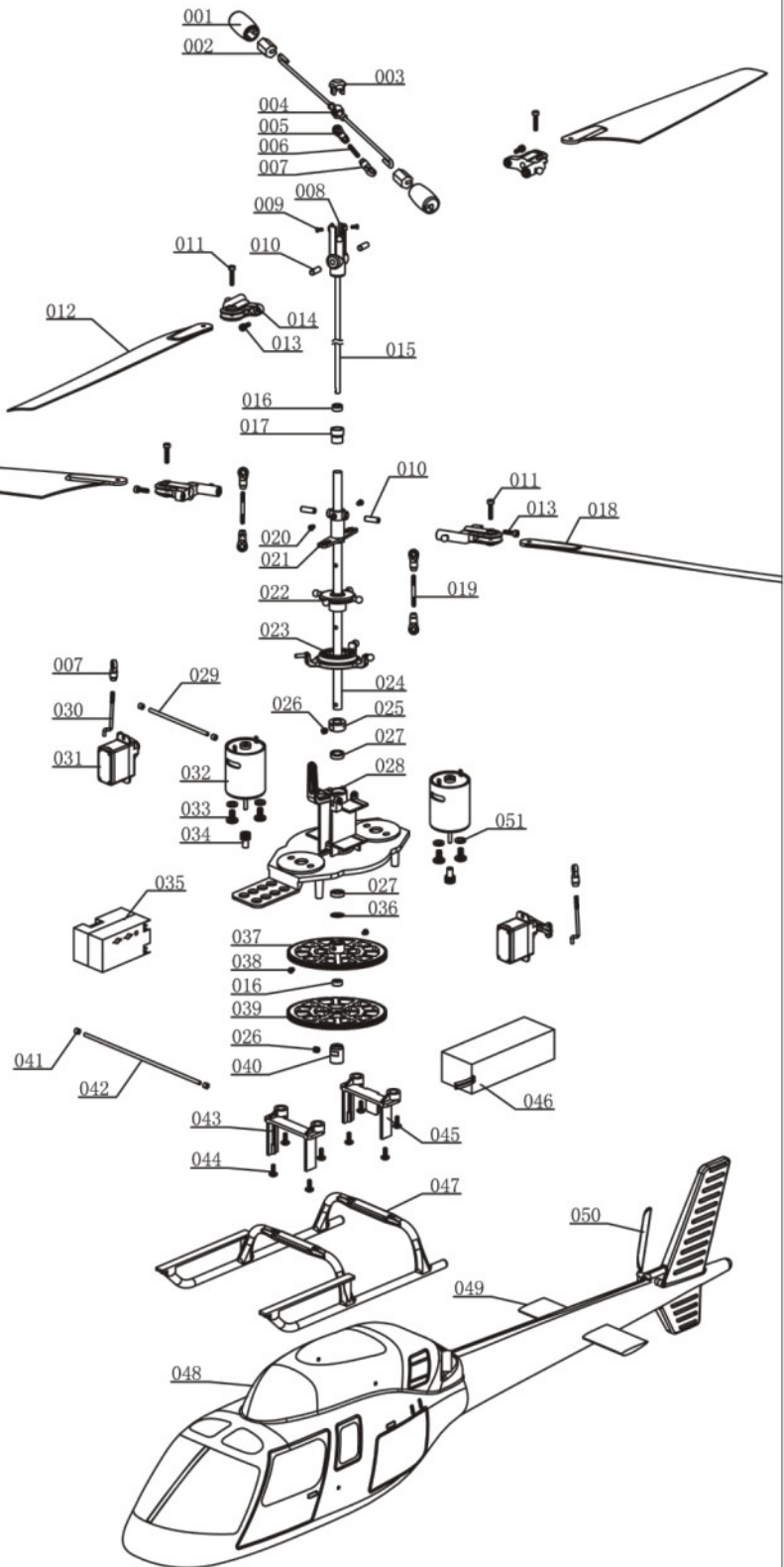
The helicopter's electricity MUST be cut FIRST



Then switch off the power of the transmitter

Exploded View

No.	Description	Quantity	Specification
001	Stabilizer Flybar Rubber Tip	2	
002	Stabilizer Flybar Weight	2	
003	Switching Brainpan	1	
004	Stabilizer Flybar Plastic Connector	1	
005	Stabilizer Flybar Linkage	1	
006	Stabilizer Flybar Linkage Rod	1	M2*10
007	Stabilizer Flybar Linkage	7	
008	Upper Rotor Head	1	
009	Round Head Phillips Screw	2	ISO1.4*3
010	Pin Stiff	4	Ø3*8
011	Hexagon Screw	4	M2*10
012	Upper Main Blade	2	
013	Hexagon Screw	4	M2*8
014	Main Blade Grip	4	
015	Outer Shaft	1	Ø3*188
016	Ball Bearing	2	Ø3*Ø6*2.5
017	Bearing Holder	1	
018	Lower Main Blade	2	
019	Stabilizer Flybar Linkage Rod	2	M2*20
020	Hexagon Socket Head Bolt	2	M2*3
021	Upper Rotor Head	1	
022	Upper Swashplate	1	
023	Lower Swashplate	1	
024	Inner Shaft	1	Φ4*Φ5*149
025	Outer Shaft Retaining Collar	1	Ø5*Ø10*5
026	Hexagon Socket Head Screw	2	M3*3
027	Ball Bearing	2	Ø5*Ø8*2.5
028	Main Frame	1	
029	Canopy Mount Rod	1	∅2*70mm
030	Pushrod	2	M2*29
031	Servo	2	
032	Motor	2	370
033	Round Head Phillips Screw	4	ISO3. 0*5. 8
034	Pinion Gear	2	M=0.5 T=11
035	4-in-1 Controller	1	
036	Step Washer	1	Ø5*Ø8*5.5
037	Outer Shaft Main Gear	1	M=0.5 T=120
038	Hexagon Socket Head Bolt	2	M2*2.5
039	Inner Shaft Main Gear	1	
040	Inner Shaft Retaining Collar	1	Ø3*Ø8*11
041	Canopy Mount Grommet	4	Φ 1. 5*Φ 3*4
042	Canopy Mount Rod (Long)	1	Ø2*100mm
043	Battery Support (Front)	1	
044	Flange Head Phillips Screw	8	M2*6
045	Battery Support (Rear)	1	
046	Li-Po Battery	1	11.1V800mAh
047	Landing Skid	1	
048	Canopy	1	
049	Horizontal Fin	1	
050	Tail Blade	1	
051	Spacer	4	∅3. 1*∅6*0. 8



Replaceable Parts List



DTS004183
Upper Main Blade



DTS004184
Lower Main Blade



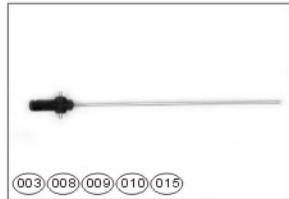
DTS004185
Front Motor Set



DTS004187
Rear Motor Set



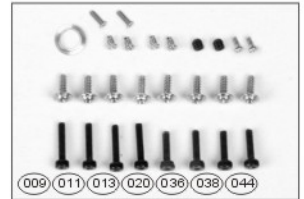
DTS004188
Stabilizer Set



DTS004189
Center Hub Set A



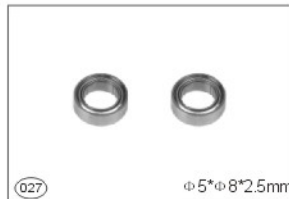
DTS004190
Center Hub Set B



DTS004191
Screw Sets



DTS004157
Bearing



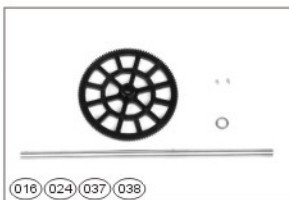
DTS004192
Bearing



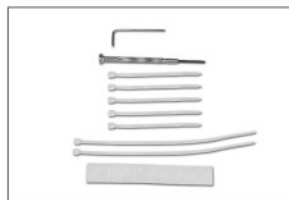
DTS004193
Main Blade Clamp



DTS004194
Driving Gear Set A



DTS004195
Driving Gear Set B



DTS004063
Allen Key



DTS004196
Swashplate



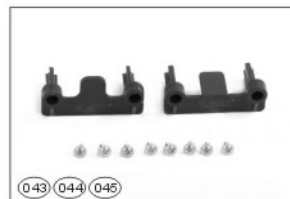
DTS004197
Bearing Fixed Set



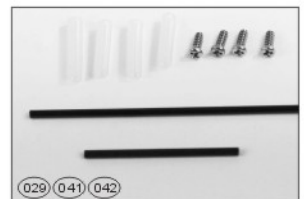
DTS004198
Single Hole Push-Rod



DTS004199
Ring-link Push-Rod



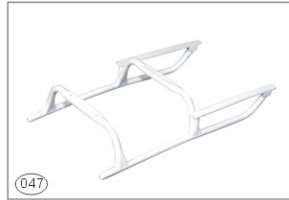
DTS004200
Battery Hanger Set



DTS004201
Cabin Shore Set



DTS004202
Main Frame



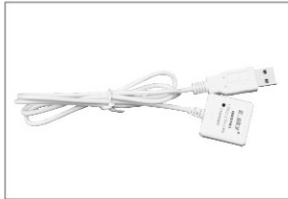
DTS004203
Landing Skit Set



DTS004054
Canopy



GWY003763
Softdog



GWY003751
Charger



DTS004168
Li-Polymer Battery



DTS003666
Digital Servo



GWY003752
Charger



DTS004011
Li-Po Battery of Transmitter



GWY004306
2.4GHz 4-in-1 Mix
Controller



GWY004307
2.4GHz 6CH Transmitter



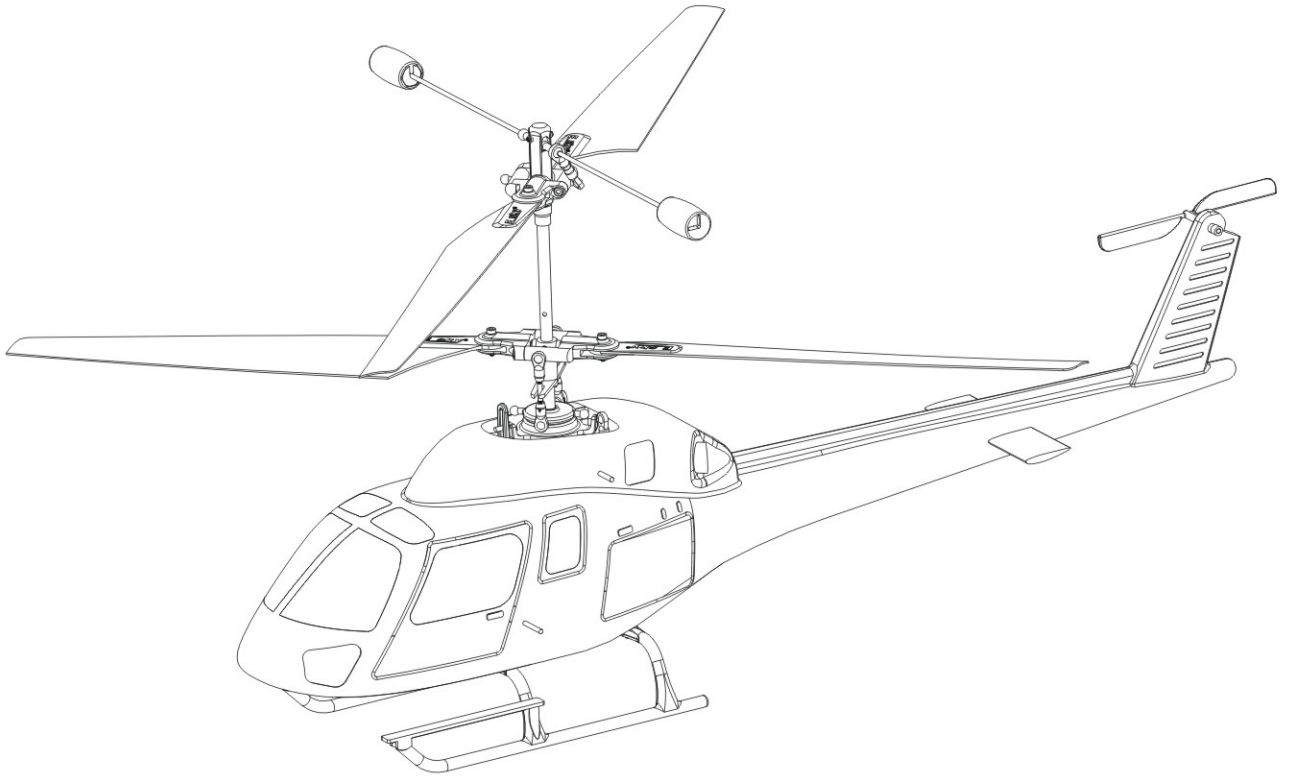
GWY004310
Transmitter 6ch &
4 in 1 control unit



GWY004314
High Frequency Transmission
Module & 4IN1 Control Unit

Note: The numbers that inside the photo frame are corresponding to the numbers that shown in the exploded view.

DTS T500 CA (Sep. 2012, V2)



前言

感谢您选择ESKY的产品！这款DTS T500 ca直升机是专为初学者开发的一款共轴双桨标准四通道电动直升机。

为了让您更好的了解和使用这款遥控直升机，请您务必仔细地阅读本说明书，然后再进行组装及操作。以确保您正确使用及安全操作！

请妥善保存本说明书，以协助您顺利的进行直升机的调整、维修等作业。

规格参数

全长：510mm

全宽：110mm

全高：260mm

主旋翼直径：Φ 460mm

总重量：约400g(含电池)

标准配备

● 11.1V 800mAh 锂电池；

● 370马达*2pcs

● 7.5g数字伺服器（1.0kg·cm 0.1s/60°）

● 六通道发射机

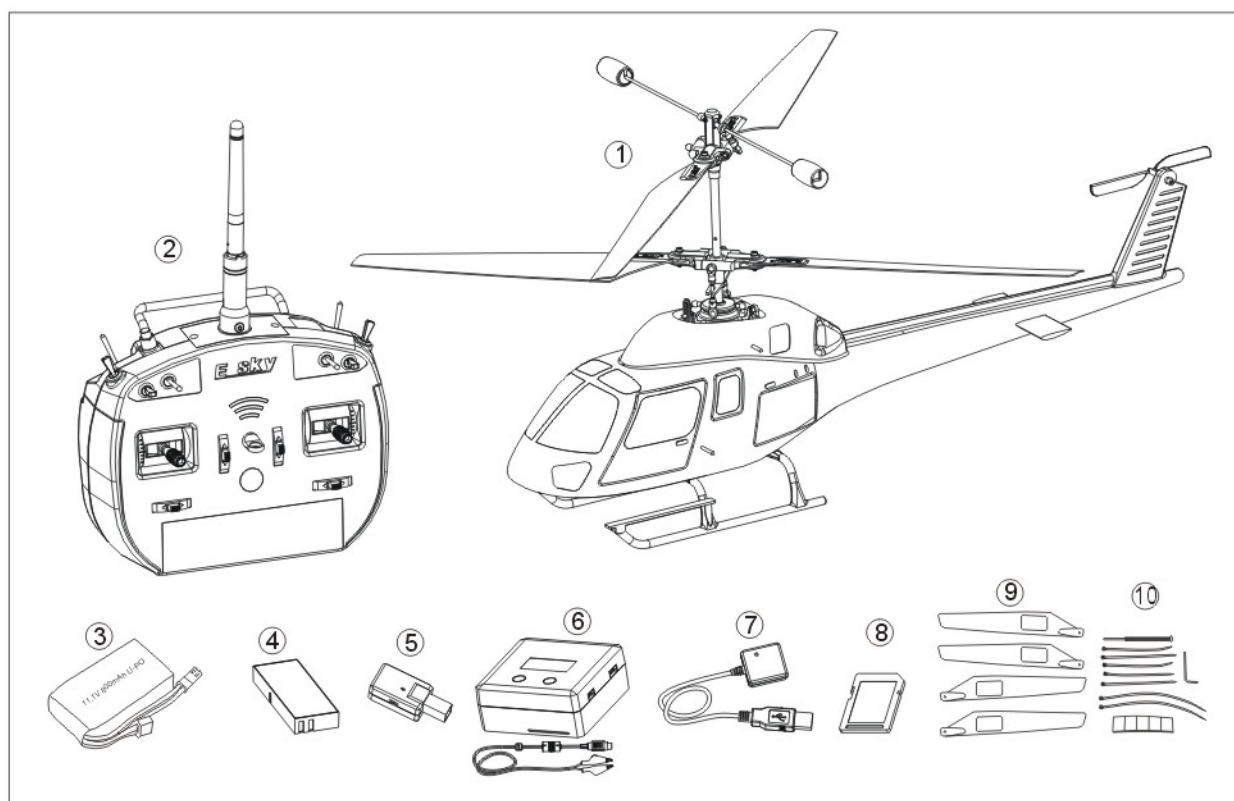
● 四合一控制器（包含：陀螺仪、电子调速器、接收机、混控）

目录

一	检查包装物及配件	2
二	6T发射机设置模块	3
三	飞行前舵面的检查	4
四	直升机部件介绍	5
五	常见故障的排除	6
六	飞行操作步骤	7
七	分解图	8
八	配件图	9

检查包装物及配件

打开包装盒后，请先检查附送配件是否齐全完整。若有遗漏，请向所购买的单位反映、索取。

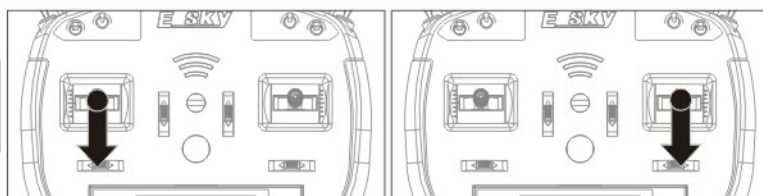
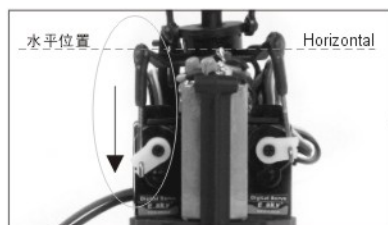
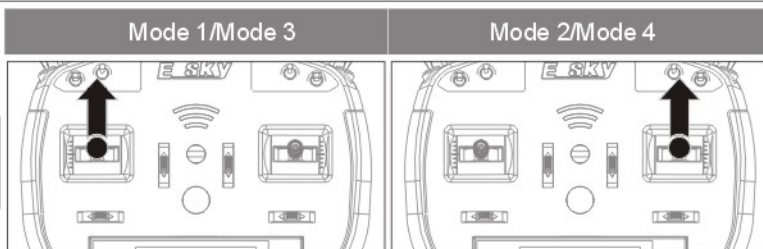
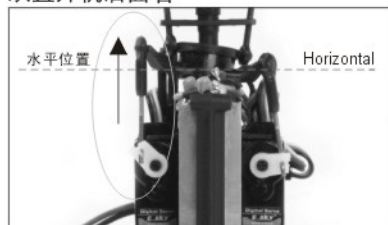


1.直升机	1
2.2.4GHz 六通道发射机	1
3.11.1V、800mAh锂电池	1
4.发射机锂电池	1
5.无线加密狗	1
6.2&3节充电器	1
7.充电线	1
8.SD卡	1
9.主旋翼	4
10.简易工具包	1

飞行前舵面的检查(出厂设置)

舵面检查：升降舵

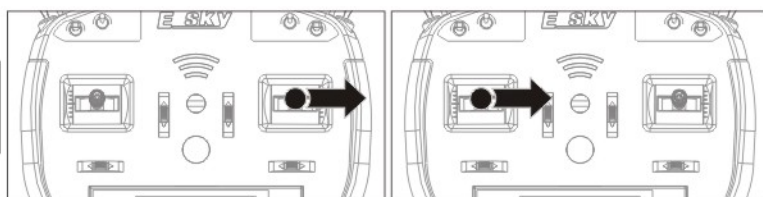
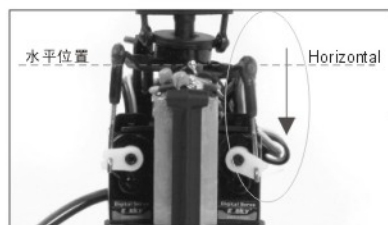
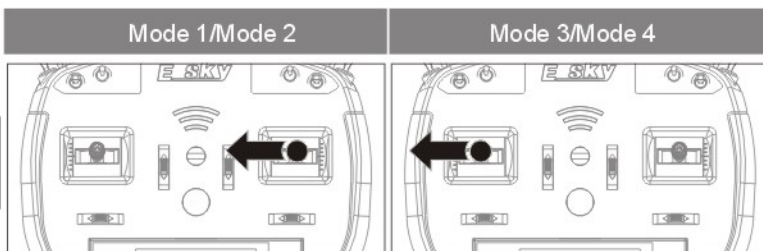
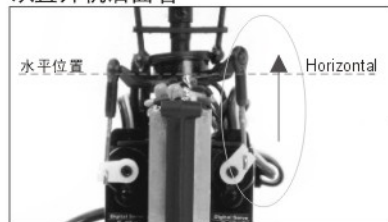
从直升机后面看



当升降摇杆向上推动时，升降伺服器将倾斜盘的一边推向上方（前进方向）；当升降摇杆向下拉动时，升降伺服器将倾斜盘的一边拉向下方（后退方向）。

舵面检查：副翼

从直升机后面看

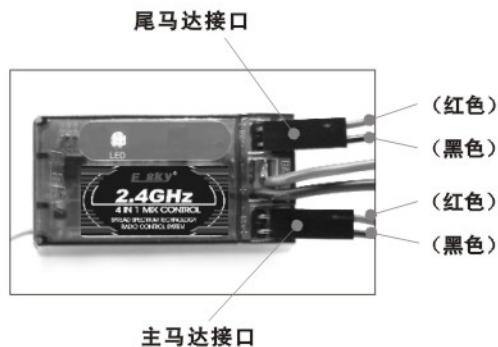


当副翼摇杆向左推动时，副翼伺服器将倾斜盘的一边推向左方；当副翼摇杆向右拉动时，副翼伺服器将倾斜盘的一边拉向右方。

直升机部件介绍

		主旋翼A
主旋翼B		主轴
副翼伺服器		后马达组
前马达组		升降伺服器
四合一控制器		电池
		滑撬

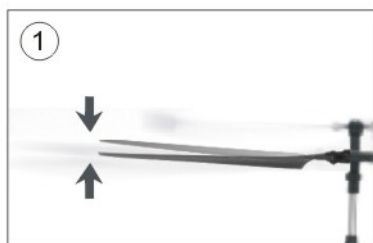
四合一控制器的连接



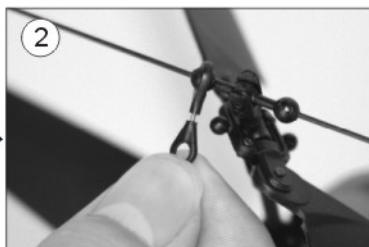
常见故障的排除

1、主旋翼的调整

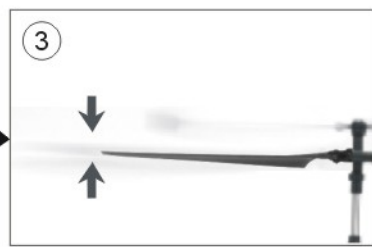
主旋翼旋转时（出现桨叶不在同一旋转轨迹上）需要对其进行调整：



飞行时，主旋翼旋转不在同一旋转轨迹上，出现重影：



将平衡翼杆上的拉杆调长或调短，这样反复调试，直到重影消失：



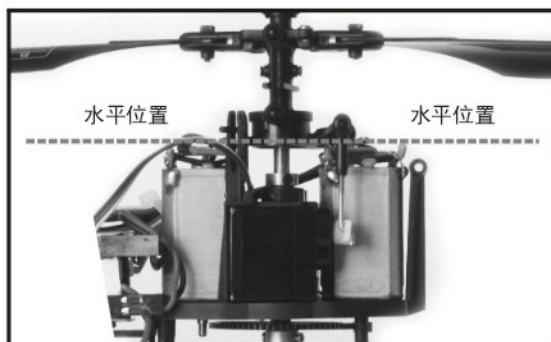
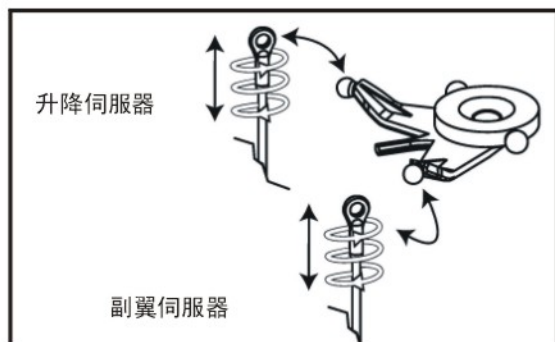
主旋翼旋转在同一旋转轨迹上，不需调整。

注意：

如果主旋翼出现破裂或大量的划痕，会影响直升机的飞行效果，应及时更换。更换时请注意主翼A和主翼B的位置。

2、伺服器拉杆的调节

飞行时，确保发射机油门微调至最低、其他微调已经居中。如果直升机依然一直朝左或朝右倾斜，请取下机壳，直升机待飞状态下，检查十字倾斜盘是否水平。如果不是水平位置，可以取下两边伺服器拉杆调整至适当长度(如下图)，直至两边配合把倾斜盘保持在水平位置，再试飞。



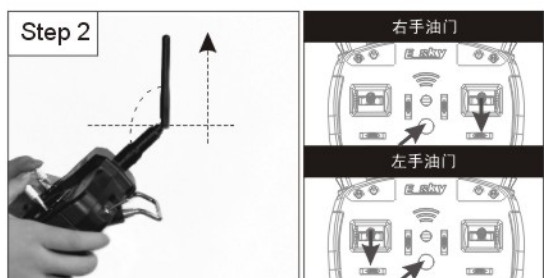
伺服器在出厂前已调试到位，并固定了其初始模式的状态，一般情况下不需重新进行调整。

飞行操作步骤

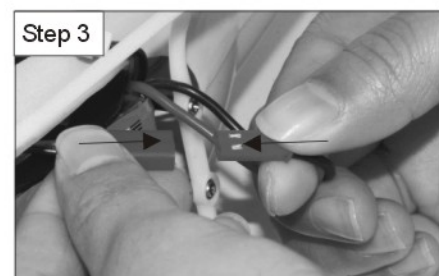
1. 起飞步骤



将充满电的电池放入电池槽，扣紧电池架，并确保不会松动。



在飞行时要将天线调成如上图所示的状态，油门摇杆移至最下方，开启发射机电源。

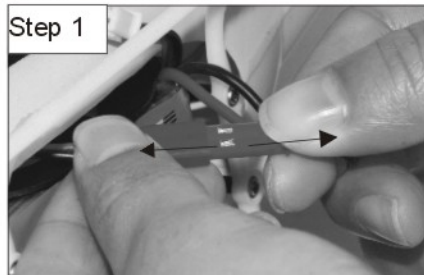


接通直升机电源。

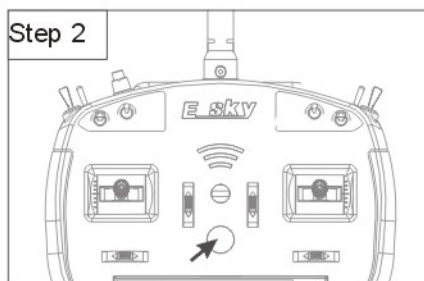


绿灯恒亮即显示待飞。

2. 结束飞行的步骤



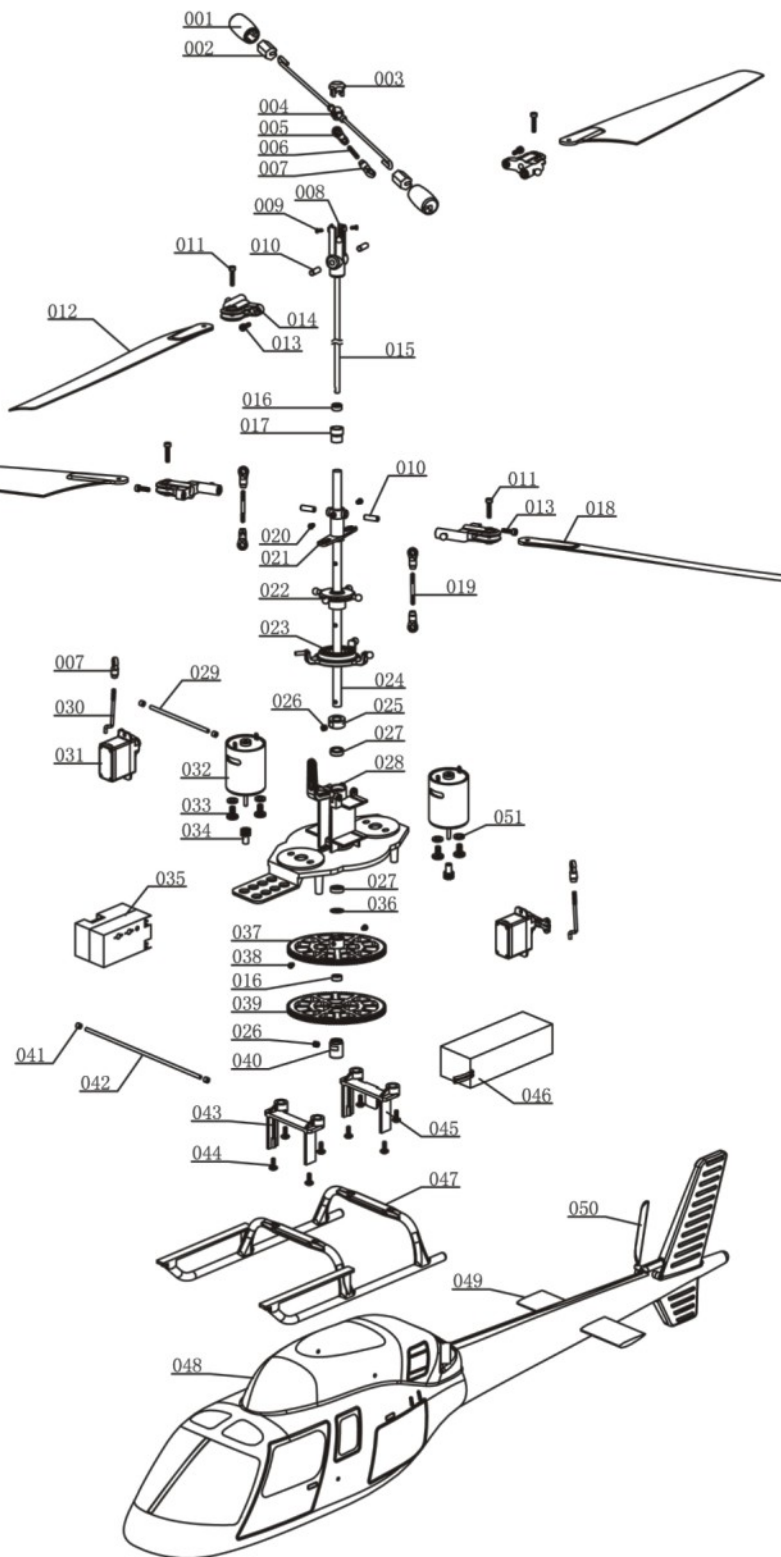
一定要先断开直升机电源；



然后再关闭发射机电源；

分解图

序号	名称	用量	规格
001	稳定锤	2	
002	配重块	2	
003	旋转头盖	1	
004	平衡翼杆	1	
005	单孔拉杆B	1	
006	无头螺杆	1	M2*10
007	单孔拉杆A	7	
008	主旋转头A	1	
009	圆头十字螺丝	2	ISO1.4*3
010	销子	4	Ø3*8
011	内六角螺丝	4	M2*10
012	主旋翼A	2	
013	内六角螺丝	4	M2*8
014	主翼夹头	4	
015	主轴A	1	Ø3*188
016	滚珠轴承	2	Ø3*Ø6*2.5
017	轴承座	1	
018	主旋翼B	2	
019	无头螺杆	2	M2*20
020	半螺纹圆头十字螺丝	2	M2*3
021	主旋转头A	1	
022	倾斜内盘	1	
023	倾斜外盘	1	
024	主轴B	1	Φ4*Φ5*149
025	定位环	1	Ø5*Ø10*5
026	无头内六角螺丝	2	M3*3
027	滚珠轴承	2	Ø5*Ø8*2.5
028	机架	1	
029	机身支杆	1	∅2*70mm
030	拉杆	2	M2*29
031	伺服器	2	
032	马达	2	370
033	圆头十字螺丝	4	ISO3.0*5.8
034	主马达齿	2	M=0.5 T=11
035	四合一控制器	1	
036	台阶垫片	1	Ø5*Ø8*5.5
037	齿轮B	1	M=0.5 T=120
038	半螺纹圆头十字螺丝	2	M2*2.5
039	齿轮A	1	
040	齿轮固定环	1	Ø3*Ø8*11
041	胶套	4	Φ1.5*Φ3*4
042	机身支杆B	1	Ø2*100mm
043	前电池架	1	
044	伞头十字螺丝	8	M2*6
045	后电池架	1	
046	锂电池	1	11.1V800mAh
047	滑撬	1	
048	机身	1	
049	水平翼	1	
050	尾旋翼	1	
051	垫片B	4	∅3.1*∅6*0.8



配件图



DTS004183
主旋翼A



DTS004184
主旋翼B



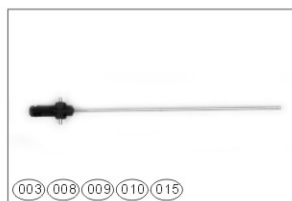
DTS004185
前马达组



DTS004187
后马达组



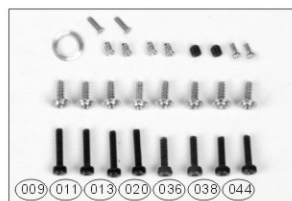
DTS004188
稳定锤



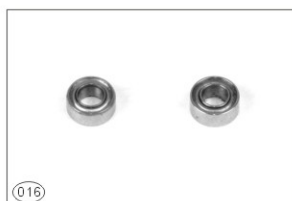
DTS004189
主旋翼头A



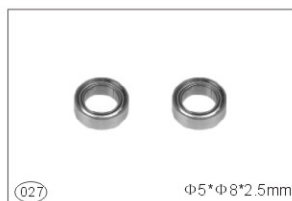
DTS004190
主旋翼头B



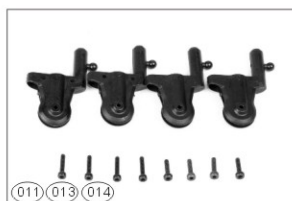
DTS004191
螺丝组



DTS004157
轴承



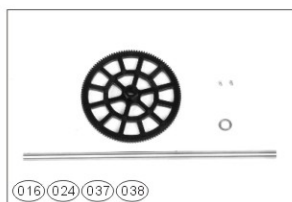
DTS004192
轴承



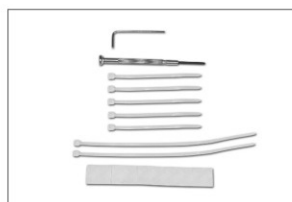
DTS004193
主翼夹头



DTS004194
主动齿轮组A



DTS004195
主动齿轮组B



DTS004063
工具包



DTS004196
倾斜盘



DTS004197
轴承固定组



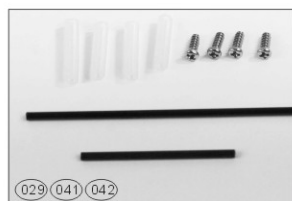
DTS004198
单孔拉杆



DTS004199
双孔拉杆



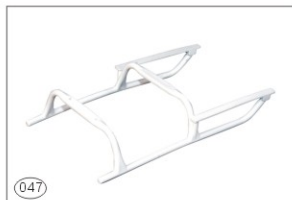
DTS004200
电池架



DTS004201
机壳支杆



DTS004202
机架



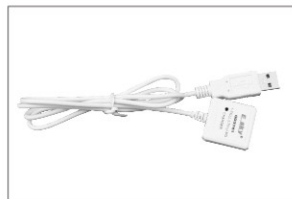
DTS004203
滑梯组



DTS004054
机壳组



GWY003763
无线加密狗



GWY003751
充电线



DTS004168
锂电池



DTS003666
数字伺服器



GWY003752
充电器



DTS004011
发射机锂电池



GWY004306
2.4GHz 四合一控制器



GWY004307
2.4GHz 6通道发射机



GWY004310
2.4GHz 6通道发射机 &
四合一控制器



GWY004314
发射机发射模块 &
四合一控制器

注：配件图中的编号为分解图中对应的零部件的编号。

Global Distribution Office

Great Top Technologies Electronic Limited Suite No. 2011, 20/F, Exchange Tower, 33 Wang Chiu Road, Kowloon Bay, Kowloon, Hong Kong.

Tel: 852-3160-8886 Fax: 852-3160-8884

Email: esky@esky-sz.cn

Official Web-site : www.esky-sz.cn
